



**B**

**E**

**A**

**ART**

**SEPT  
2024**



# EDITORS' WELCOME

This is a quick newsletter primarily to keep in touch, and although LAS does not have an exhibition planned until 2025, we thought this might be a wonderful opportunity to promote what is happening throughout the region to ensure LAS members keep painting and showing their work.

Don't forget also that there are still some wonderful workshops on offer, and that members are always welcome to join everyone on Wednesday at the RSL and to come along to the Art History sessions to learn and share your knowledge.

And - we also hope everyone survived that dreadful weather without too much damage or inconvenience. Let's hope that that doesn't become a regular occurrence!

So sit back and enjoy this edition, and be sure to let us know if you have anything to share in the next edition

Sandy and Gerry

IMAGE FRONT COVER:

Senecio, by Paul Klee (1922)

<https://www.studiobinder.com/blog/what-is-bauhaus-art-movement/>

Bauhaus Movement - learn more at LAS next Art History Discussion Morning  
Wednesday Oct 3



# ACTING PRESIDENT'S REPORT

Hello members,

Since Our City exhibition closed things have been very busy at LAS! As we have deferred the final exhibition for 2024 the committee are hoping to hold an Art Market in the time allotted by Legacy House during October.

An expression of interest for the market has been forwarded to members and due to the high level of interest a conditions of entry document is in the final stages of preparation, and I assume, by the time Artbeat is published members would have received this, and hopefully, committed to this event. It will be a great opportunity to both display work and sell without commission being charged. This is to be a three-day event from 11-13th October, 2024.

Our lovely facilities at RSL Wellington Street have also received a facelift. The walls have been removed and repainted where necessary and there is now a large lovely, light filled area for members to use on Wednesday. The enlarged space also facilitates ease of movement /communication during workshops.

It will be great to be able to rehang our art collection when a few new rails have been installed as these have been missed during the renovations over the last few months.

Please keep in mind all members are welcome to share our wonderful space on Wednesdays and the committee look forward to welcoming any new faces who may wish to join the regular attenders.

Happy creating

Mary Stary  
Acting President.

# When the Wall Came Down!

Monique Tehge

Though it was always a joy gathering in our little Studio space, at times it was a squeeze, with a flurry of members, sharing the space with paints, cups of tea, and artworks galore. There has definitely been a time or two when there has not been room to swing a cat, let alone the elbow room to adjust an easel.

From the 10th of July, this has no longer been the case. The R.S.L demolition team swept in and skillfully removed the walls of the little offices adjacent to the main office. This not only opened up the Studio capacity, it allowed for better flow of light, and more hanging wall space. Members have basked in the warm flow of light as it pours in through the wall of windows, at the perfect angle for the whole day.

There has been enjoyment and antics while moving the tables around the last couple of weeks to find the right configuration to maximise the space, pop in and have a cuppa, and have a peep at the new bigger and brighter space.



# EXHIBITIONS



dAda  
muse

# POETRY & 2D SURREALIST ART PRIZE

Applications Now Open

Poetry and 2D

**SURRE**

**ALIST**

Art Prize





*The Postgraduate Gallery Society*

# Member's Exhibition



Gallery (2024) Gulcan Kilino. Print on paper 30 x 38cm framed

## The Grove

Maritime Way

UTAS Newnham Campus

Newnham

10<sup>th</sup> – 20<sup>st</sup> September 2024

Gallery open Tuesday – Saturday 10am -2pm

### Official Exhibition Opening

13<sup>th</sup> September 2024 5.30pm - 7pm

Guest speaker: Dr Edna Broad (PhD)

Officeworks

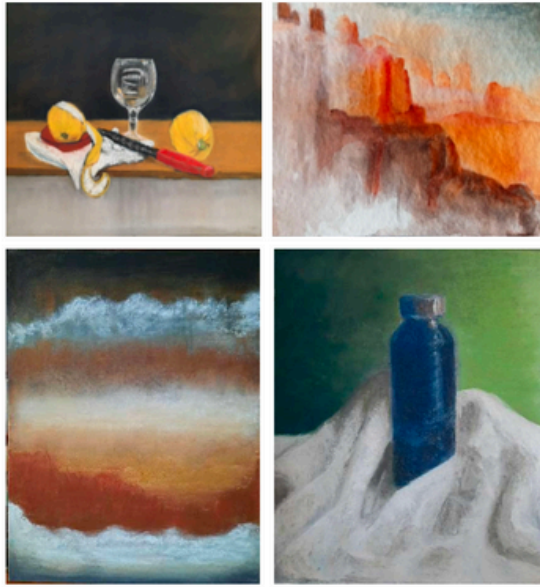
TUSA



*Something old, new, borrowed, and blue*  
An artistic journey of ongoing exploration  
by  
Snéhi Jarvis

## **Exhibition**

**27 September 2024 to 20 October 2024**



The Poatina Tree Art Gallery, Poatina, Tasmania  
Gallery opening hours: Friday to Sunday, 10.00 am to 4.00 pm

You are warmly invited to the official opening and artist's talk  
on

**Sunday 29 September 2024**  
**at 2.00 pm**

The Poatina Tree Art Gallery open  
in conjunction with the Tiers Tea Lounge





# 2024 Meander Valley Art Award

Little Theatre, Deloraine  
26 October–10 November

Entries close Friday 11 October  
Total prize pool \$9300

Entry forms and online entries:  
[www.meander.tas.gov.au/meander-valley-art-award](http://www.meander.tas.gov.au/meander-valley-art-award)  
Entry forms can also be picked up locally  
or downloaded from Arts Deloraine on Facebook

# Source

*Image: detail of Dayspring Meandering, Gary Billing, 2023*

Proudly sponsored by



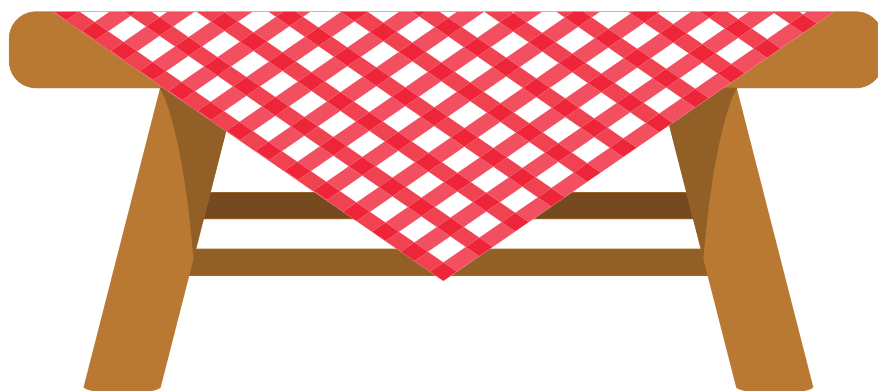
# **Our Faithful Tablecloths (a very important cover up!!)**

Monique Tehge

The vibrant but well loved felt backed plastic tablecloths, crackle and swoosh as they are keenly unfolded in an energetic toss each Wednesday morning. It all happens not too different from that of a bedsheet unfurled across the bed. These babies have been through some creative adventures!

They have truly outlived their life expectancy, maybe it is the quality, or maybe it is the gentle care of members, as they fold and store them at the end of the day. With holes and tears only recently becoming evident, it seems they have heard a hundred conversations twice over, seen many new journeys and friendships, supported many blank beginnings, heard many helpful hints and requests for guidance, laughter and the occasional gasp as a splatter of something arty hits the wrong place...just another memory on the cloth. Spilt paint, spilt water, spilt tea and of course spilt tears.

These tablecloths have endured and silently supported more colourful ideas and inspirations than Rembrandt himself. As always, members are welcome at the studio on Wednesdays 10 am-3pm. Come see the crisp new plaid tablecloths and make some art, memories, and if you must make your mark!



# Celebrating the Achievements of our Members

Congratulations to Joanna Castle and William Muldoon who both sold their work at the Art Society of Tasmania's exhibition "Antarctica" at the Long Gallery Salamanca Place. Fingers crossed for all our other exhibitors in this and other current exhibitions



'Southern Ocean'  
Joanna Castle

'Antarctica'  
William Muldoon





**W**

**O**

**R**

**K**

**SHOPS**

# Calendar for 2024

## LAS workshops

Registrations are open for each workshop on the 1st of the month in which they are to be held. However, if you would like to ensure your place in a particular workshop that is also acceptable, though at times the final cost may not have been decided upon. This is an area we are working on improving. The cost varies due to out-payments to our tutors, accommodation, travel expenses, equipment the LAS provides etc but we do try to keep our costs within a reasonable range.

**SOLD OUT**  
Saturday 21st September

"Exploring the Fluidity of Watercolour" with Darren Meader

Saturday 19th October

"Exploring Abstract techniques" acrylics with Pam Lockwood

Saturday 16th November

"Who do You Think You Really Are?" with Richard Klekocuiik

Planning for 2025 tasters and workshops are being organised now. If you are interested in being a tutor, please contact Lyndel.

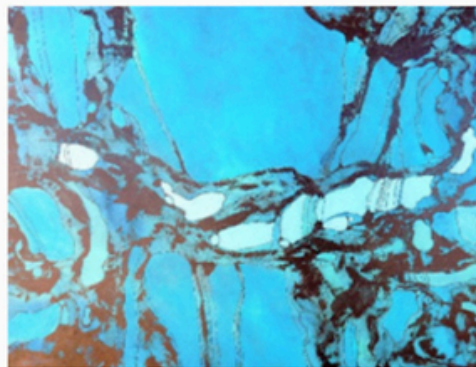
For further information regarding any of the above workshops please contact our  
Workshop Coordinator:  
Lyndel Rawlings: 0438 265 457 [lrawlings@y7mail.com](mailto:lrawlings@y7mail.com) or  
[lasinternetters@gmail.com](mailto:lasinternetters@gmail.com)

# Exploring Abstract Techniques in Acrylic

**Saturday, 19th October**  
10.00am - 4pm

Pam will demonstrate several techniques that she uses in her art work – pouring, spraying, scraping, using pallet knife and more. She will also bring a few of her art pieces so we can share in her knowledge and experience. Participants will have the opportunity to work on at least two pieces during the day, experimenting with ideas and techniques shared by Pam.

Throughout the day Pam will work on several pieces as well.



## **COST**

\$130.00 for members • \$150.00 for non-members

*Early bird price for members - \$110 if paid by 19th September*

**To register please contact Lyndel Rawlings**

0438 265 457 • [lrawlings@y7mail.com](mailto:lrawlings@y7mail.com)



## WHO DO YOU THINK YOU REALLY ARE?

Are you ready to reveal  
your true personality?

A Coloured Pencil  
Workshop with

***Richard Klekociuk***

**ALL MATERIALS PROVIDED**



LAUNCESTONARTSOCIETY

**Saturday, November 16th**

**10am - 4pm**

**\$140 Members**

**\$160 Non-Members**

\$20 discount if paid

before October 16th

Contact Lyndel Rawlings  
for bookings:

**0438 265 457**

**[lrawlings@y7mail.com](mailto:lrawlings@y7mail.com)**

**LAUNCESTON RSL HQ**

**313 Wellington St**

**South Launceston**

# Our Taster Sessions are a hit!



An old bird with a dead bird!  
Learning more about painting birds!



Heading home!



Exploring Abstraction ... taster by Edna Board on 10 Aug





**THE  
HISTORY  
OF ART**

**WED  
OCT  
3**

# **BAUHAUS**



**JOIN  
THE  
DISCUSSION**

**1.30 - 2.30 pm  
LAUNCESTON RSL**



LAS's Art History Discussion has been very popular with members enjoying a Cubist discussion (pictured above) in August, followed by a wonderful Powerpoint presentation by Snehi Jarvis on Caravaggio. He was our artist of interest and despite his short, interesting life his work and style have been Influential throughout history.

Next Discussion group will be on October 2nd and we will be discussing the Bauhouse School of Art.

# Why are there so many half-peeled lemons in the still life paintings?!

Lemons were luxury items. They were incredibly expensive, and therefore a symbol of wealth. They were a reminder of the power of the newly formed Dutch nation - the merchant class had become so wealthy that they could afford to grow this fruit inside orangeries all year round. They were essentially a way of showing off! An old fashioned status symbol.


Lemons illustrated the skill of the artist. Lemon peel trailing off the table like this was not an easy thing to paint. It took real skill to get the perspective right, to make it completely convincing to the viewer. The curlier the peel, the better the painter.

Lemons were a memento mori. A reminder of the transience of life, and mortality. All fruit, especially when peeled, rots quickly. The Dutch loved their reminders of death - others include flowers, time pieces, skulls. The idea was that an awareness of death would heighten the appreciation of the present.

Look out for the lemon when you next see a Dutch still life painting!



**A reminder to be part  
of our Wednesday  
painting group in the  
Launceston RSL studio**

A glass jar filled with various paintbrushes, sitting on a green tray next to a glass of coffee. The background is a blurred indoor setting, likely a studio or cafe.

**A friendly &  
informal day  
10am - 3pm**

# LAS Committee Contacts

## EXECUTIVE POSITIONS

<b>President</b>	Position Vacant		
<b>Acting President</b>	Shirley Pitt	0459 980 721	shirleyj48@hotmail.com
<b>Vice President</b>	Mary Stary		lasinternetters@gmail.com
<b>Public Officer</b>	Shirley Pitt	0459 980 721	shirleyj48@hotmail.com
<b>Secretary</b>	Position Vacant		
<b>Treasurer</b>	Pat Cullen		lasinternetters@gmail.com

## PORTFOLIO POSITIONS

### Exhibitions Coordinator

### Newsletter Editors

Gerry Jensen	0408 103 796	tangtoo@iprimus.com.au
Sandy Astill	0412 240 190	sandra.astill@bigpond.com

### Membership Officer

Lyndel Rawlings	0438 265 457	lrawlings@y7mail.com
-----------------	--------------	----------------------

### Publicity Officer

Monique Tehge	0404 237 621	monzziet@gmail.com
---------------	--------------	--------------------

### Social Activities Officer

Shirley Pitt	0459 980 721	shirleyj48@hotmail.com
--------------	--------------	------------------------

### Workshop Coordinator

Lyndel Rawlings	0438 265 457	lrawlings@y7mail.com
-----------------	--------------	----------------------

## COMMITTEE POSITIONS

Tess Way	0419 341 780	tessway@bigpond.com
----------	--------------	---------------------